

## Performance Report for: <https://concept3d.com/>

Report generated: Sat, Mar 23, 2024 5:21 AM -0700  
 Test Server Location: Vancouver, Canada  
 Using: Chrome 117.0.0.0, Lighthouse 11.0.0

<b>E</b>	Performance	Structure	L. Contentful Paint	T. Blocking Time	C. Layout Shift
	<b>52%</b>	<b>67%</b>	<b>2.6s</b>	<b>506ms</b>	<b>0</b>

### Top Issues

High	<b>Avoid enormous network payloads</b> <small>LCP</small>	Total size was 8.47MB
Med-High	<b>Eliminate render-blocking resources</b> <small>FCP LCP</small>	Potential savings of 866ms
Med-Low	<b>Serve static assets with an efficient cache policy</b>	Potential savings of 249KB
Med-Low	<b>Avoid long main-thread tasks</b> <small>TBT</small>	10 long tasks found
Med-Low	<b>Avoid document.write()</b>	1 instance found

### Page Details



Total Page Size - 9.46MB



Total Page Requests - 197



Legend: HTML JS CSS IMG Video Font Other

### How does this affect me?

Today's web user expects a fast and seamless website experience. Delivering that fast experience can result in increased visits, conversions and overall happiness.

As if you didn't need more incentive, **Google has announced that they are using page speed in their ranking algorithm.**

### About GTmetrix

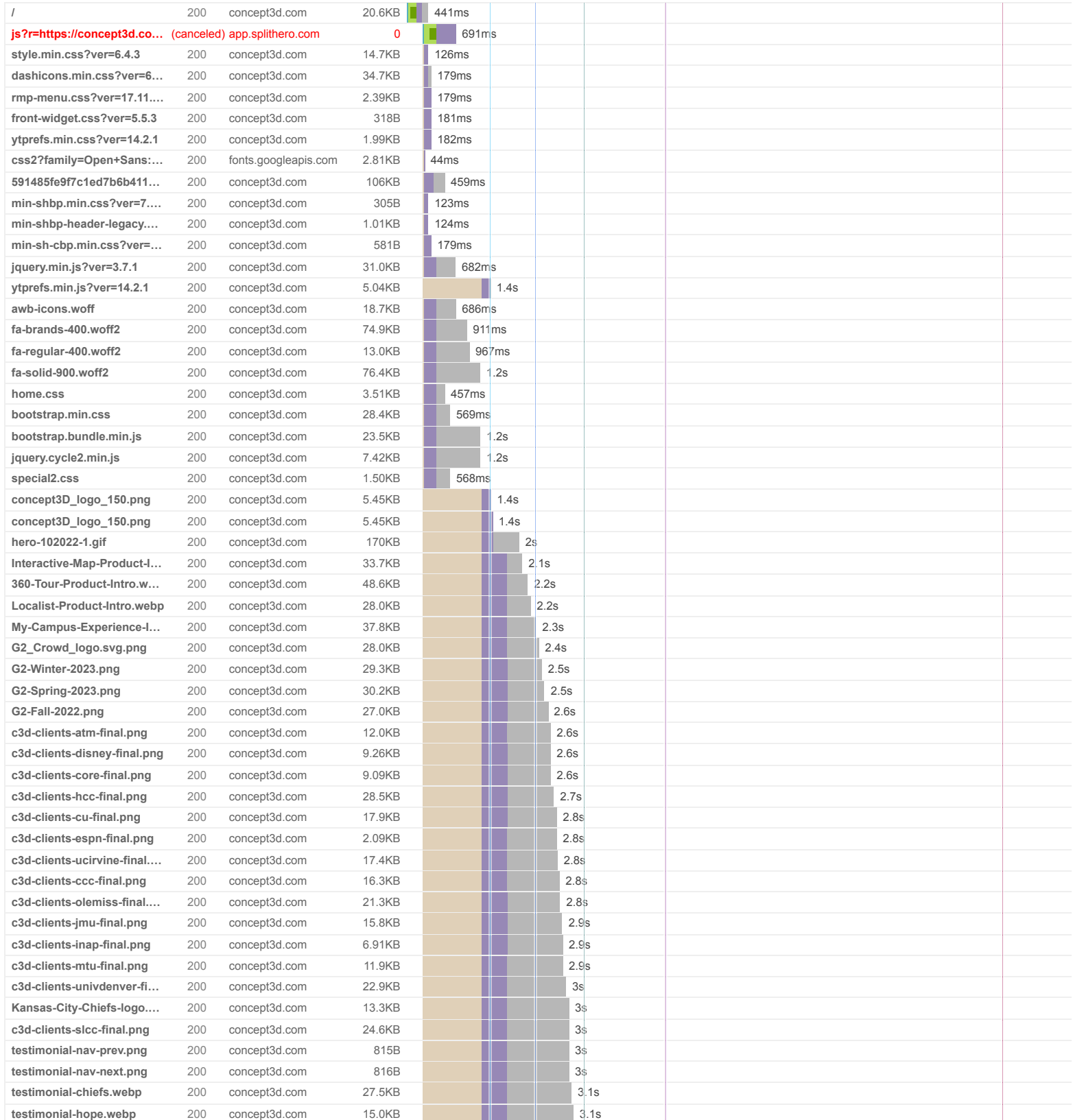


GTmetrix is developed by the good folks at **Carbon60**, a Canadian hosting company with over 28 years experience in web technology.

<https://carbon60.com/>

The waterfall chart displays the loading behaviour of your site in your selected browser. It can be used to discover simple issues such as 404's or more complex issues such as external resources blocking page rendering.

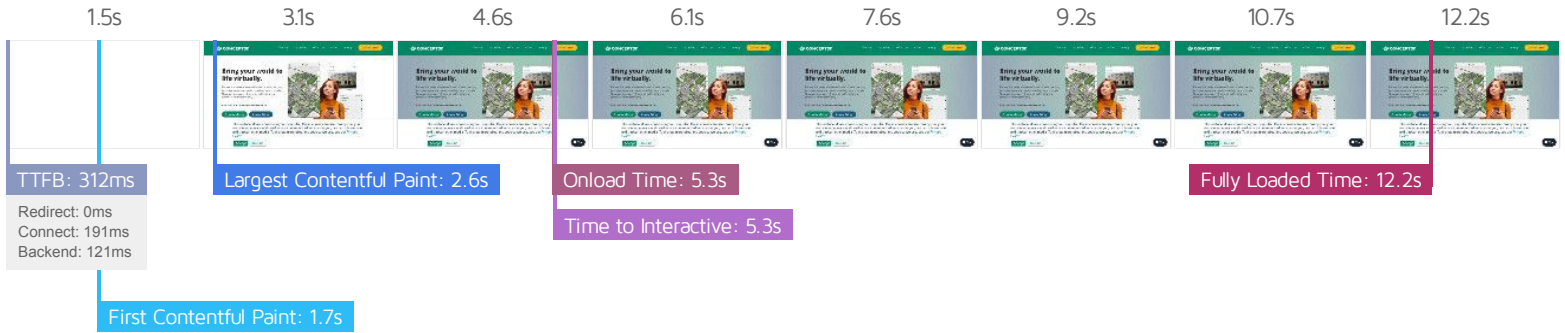
### 3D Mapping and Virtual Tour Software | Concept3D



testimonial-sonoma-state...	200	concept3d.com	20.9KB			3.1s		
Home_Projects_BeforeAf...	200	concept3d.com	30.8KB			3.2s		
Home_Projects_Interactiv...	200	concept3d.com	31.4KB			3.2s		
Home_Projects_UI.jpg	200	concept3d.com	7.64KB			3.2s		
aicpa-soc-125px.png	200	concept3d.com	20.3KB			3.3s		
footer.css?ver=6.4.3	200	concept3d.com	437B		1.3s			
20291248.js?integration=...	200	js.hs-scripts.com	1.23KB		1.4s			
rmp-menu.js?ver=4.3.2	200	concept3d.com	3.18KB		1.2s			
front-widget.js?ver=6.4.3	200	concept3d.com	743B		1.2s			
fitvids.min.js?ver=14.2.1	200	concept3d.com	1.24KB			3.2s		
7e61af1eab12a890fac60b...	200	concept3d.com	58.1KB		1.3s			
max-1c.min.css?ver=7.6.1	200	concept3d.com	496B				4.2s	
max-2c.min.css?ver=7.6.1	200	concept3d.com	582B				4.2s	
min-2c-max-3c.min.css?v...	200	concept3d.com	587B				4.2s	
min-3c-max-4c.min.css?v...	200	concept3d.com	564B				4.2s	
min-4c-max-5c.min.css?v...	200	concept3d.com	537B				4.2s	
min-5c-max-6c.min.css?v...	200	concept3d.com	496B				4.2s	
max-shbp.min.css?ver=7....	200	concept3d.com	351B				4.2s	
max-shbp-header-legacy....	200	concept3d.com	1.63KB				4.2s	
max-sh-shbp.min.css?ver...	200	concept3d.com	332B				4.2s	
max-sh-shbp-header-lega...	200	concept3d.com	2.45KB				4.2s	
min-768-max-1024-p.min....	200	concept3d.com	2.56KB				4.2s	
min-768-max-1024-p-head...	200	concept3d.com	524B				4.2s	
min-768-max-1024-l.min.c...	200	concept3d.com	437B				4.2s	
min-768-max-1024-l-head...	200	concept3d.com	432B				4.2s	
max-sh-cbp.min.css?ver=...	200	concept3d.com	2.19KB				4.2s	
max-sh-sbp.min.css?ver=...	200	concept3d.com	367B				4.2s	
max-sh-640.min.css?ver=...	200	concept3d.com	991B				4.2s	
max-shbp-18.min.css?ver...	200	concept3d.com	463B				4.2s	
max-shbp-32.min.css?ver...	200	concept3d.com	317B				4.2s	
max-640.min.css?ver=7.6.1	200	concept3d.com	1.20KB				4.2s	
max-main.min.css?ver=7....	200	concept3d.com	538B				4.2s	
max-cbp.min.css?ver=7.6.1	200	concept3d.com	339B				4.2s	
max-sh-cbp-social-sharin...	200	concept3d.com	381B				4.2s	
max-sh-cbp.min.css?ver=...	200	concept3d.com	775B				4.2s	
min-768-max-1024-p.min....	200	concept3d.com	1.06KB				4.2s	
max-640.min.css?ver=3.6.1	200	concept3d.com	656B				4.2s	
max-1c.css?ver=3.6.1	200	concept3d.com	331B				4.2s	
max-2c.css?ver=3.6.1	200	concept3d.com	355B				4.2s	
min-2c-max-3c.css?ver=3...	200	concept3d.com	429B				4.2s	
min-3c-max-4c.css?ver=3...	200	concept3d.com	422B				4.2s	
min-4c-max-5c.css?ver=3...	200	concept3d.com	413B				4.2s	
min-5c-max-6c.css?ver=3...	200	concept3d.com	397B				4.2s	
gtm.js?id=GTM-NWG2SNG	200	googletagmanager.c...	99KB		586ms			
fviaseoNmi8	200	youtube.com	37.2KB		146ms			
hero-bkrd.jpg	200	concept3d.com	49.2KB			2.1s		
cta-arrow-blue.png	200	concept3d.com	231B			2.1s		
intro-demo-bottom-edge....	200	concept3d.com	17.2KB			2.1s		
memvYaGs126MiZpBA-U...	200	fonts.gstatic.com	47.1KB		112ms			
Home_Projects_BeforeAf...	206	concept3d.com	1.25MB				4.8s	
Home_Projects_Interactiv...	206	concept3d.com	2.13MB				6.3s	
Home_Projects_UI.mp4	206	concept3d.com	1.38MB				5.8s	
web-interactives-embed.js	200	js.hubspot.com	24.7KB		145ms			
fb.js	200	js.hsadspixel.net	3.59KB		44ms			
collectedforms.js	200	js.hscollectedforms.net	25.2KB		144ms			
20291248.js	200	js.hs-analytics.net	21.2KB		153ms			
20291248.js	200	js.hs-banner.com	17.0KB		133ms			
leadflows.js	200	js.hsleadflows.net	87.8KB		51ms			
widget-latest.js	302	app.smith.ai	0		162ms			
www-player.css	200	youtube.com	46.9KB		93ms			
embed.js	200	youtube.com	17.7KB		69ms			
www-embed-player.js	200	youtube.com	95.5KB		96ms			

base.js	200	youtube.com	782KB	123ms		
KFOmCnqEu92Fr1Mu4mx...	200	fonts.gstatic.com	15.0KB	96ms		
KFOICnqEu92Fr1MmEU9f...	200	fonts.gstatic.com	15.2KB	97ms		
js?id=G-EHCX15LVD2&l=...	200	googletagmanager.c...	108KB	47ms		
20291248.js	200	js.hs-scripts.com	838B	104ms		
insight.min.js	200	snap.lidn.com	16.8KB	224ms		
fbevents.js	200	connect.facebook.net	56.3KB	824ms		
analytics.js	200	google-analytics.com	20.5KB	170ms		
hotjar-2617498.js?sv=7	200	static.hotjar.com	4.06KB	318ms		
5138.js?p=https://concept...	200	tracking.g2crowd.com	1.11KB	269ms		
build.js	200	s3-us-west-1.amazo...	1.19MB	250ms		
OPTIONS view	200	js.hs-banner.com	0	98ms		
POST view	204	js.hs-banner.com	171B	196ms		
combinedConfigs?portall...	200	cta-service-cms2.hu...	1.18KB	129ms		
json?portalId=20291248&...	200	forms.hscollectedfor...	454B	119ms		
942102860?random=1711...	200	googleads.g.doublec...	1.28KB	50ms		
counters.gif?key=collecte...	200	forms.hsforms.com	1.15KB	128ms		
collect?v=2&fmt=js&pid=...	302	px.ads.linkedin.com	0	142ms		
id	302	googleads.g.doublec...	0	54ms		
id?slf_rd=1	302	googleads.g.doublec...	0	53ms		
ad_status.js	200	static.doubleclick.net	29B	56ms		
POST Create	200	jnn-pa.googleapis.com	40.5KB	91ms		
OPTIONS Create	200	jnn-pa.googleapis.com	0	54ms		
remote.js	200	youtube.com	33.1KB	16ms		
WYtIt-NnTSB_lq9CaAb1l...	200	google.com	19.7KB	45ms		
maxresdefault.webp	200	i.ytimg.com	81.4KB	84ms		
css?family=Open+Sans:4...	200	fonts.googleapis.com	1.66KB	22ms		
widget-latest.css	302	app.smith.ai	0	53ms		
Aldro_kJhRQTycAdIS5qO...	200	yt3.ggpht.com	2.12KB	146ms		
widget/	200	app.smith.ai	1.12KB	148ms		
OPTIONS widget/	200	app.smith.ai	0	75ms		
id?slf_rd=1	200	googleads.g.doublec...	120B	20ms		
modules.0ce9b654b0ac7f...	200	script.hotjar.com	54.2KB	75ms		
counters.gif?key=config-l...	200	perf-na1.hsforms.com	1.07KB	167ms		
collect?v=2&fmt=js&pid=...	302	px.ads.linkedin.com	0	112ms		
styles.css	200	s3-us-west-1.amazo...	170KB	51ms		
942102860?random=1711...	200	google.com	42B	47ms		
942102860?random=1711...	200	google.ca	42B	72ms		
351821369659895?v=2.9.1...	200	connect.facebook.net	11.7KB	298ms		
POST GenerateIT	200	jnn-pa.googleapis.com	134B	71ms		
OPTIONS GenerateIT	200	jnn-pa.googleapis.com	0	26ms		
OmUv0Cg5Sx33h9PxqX0q	200	cdn.filestackcontent....	1.35KB	53ms		
cast_sender.js	200	gstatic.com	1.96KB	74ms		
li_sync?redirect=https%3...	302	linkedin.com	0	136ms		
generate_204?sMea6g	204	youtube.com	0	21ms		
cast_sender.js	200	gstatic.com	15.0KB	23ms		
collect?v=2&fmt=js&pid=...	200	px.ads.linkedin.com	384B	97ms		
tr?id=351821369659895&...	200	facebook.com	270B	460ms		
POST wa/	204	px.ads.linkedin.com	195B	89ms		
iframe_api	200	youtube.com	1.57KB	60ms		
POST log_event?alt=json...	200	youtube.com	50B	18ms		
fviaseoNmi8?enablejsapi...	200	youtube.com	37.2KB	70ms		
www-widgetapi.js	200	youtube.com	66.8KB	42ms		
POST atr?ns=yt&ei=embe...	(canceled)	youtube.com	0	28ms		
POST log?format=json&h...	(canceled)	play.google.com	0	18ms		
OPTIONS log?format=jso...	(incomplete)	play.google.com	0			>8.3s
POST log_event?alt=json...	(canceled)	youtube.com	0	1ms		
www-player.css	200	youtube.com	0	14ms		
embed.js	200	youtube.com	0	14ms		
www-embed-player.js	200	youtube.com	0	0ms		
base.js	200	youtube.com	0	0ms		
KFOmCnqEu92Fr1Mu4mx...	200	fonts.gstatic.com	0	0ms		

KFOICnqEu92Fr1MmEU9f...	200	fonts.gstatic.com	0				0ms	
id	302	googleads.g.doublec...	0				14ms	
id?slf_rd=1	302	googleads.g.doublec...	0				13ms	
ad_status.js	200	static.doubleclick.net	0				1ms	
POST Create	200	jnn-pa.googleapis.com	40.5KB				25ms	
remote.js	200	youtube.com	0				0ms	
WYtIt-NnTSB_lq9CaAb1l...	200	google.com	0				0ms	
maxresdefault.webp	200	i.ytimg.com	0				0ms	
id?slf_rd=1	200	googleads.g.doublec...	146B				17ms	
Aldro_kJhRQTycAdIS5qO...	200	yt3.ggpht.com	0				0ms	
cast_sender.js	200	gstatic.com	0				0ms	
POST GenerateIT	200	jnn-pa.googleapis.com	134B				20ms	
cast_sender.js	200	gstatic.com	0				0ms	
generate_204?IVFxtA	204	youtube.com	0				23ms	
logo.png	200	concept3d.com	6.86KB				439ms	
20291248.js	200	js-na1.hs-scripts.com	862B				127ms	
__ptq.gif?k=1&sd=1367x8...	200	track.hubspot.com	45B				131ms	
favicon_Concept3D_Web...	200	concept3d.com	6.26KB				248ms	
POST log_event?alt=json...	200	youtube.com	50B				18ms	
json?portalId=20291248&...	200	forms.hubspot.com	1.14KB					139ms
<b>197 Requests    9.46MB (26.0MB Uncompressed)    Fully Loaded 12.2s (Onload 5.3s)</b>								



### Performance Metrics

<p><b>First Contentful Paint</b></p> <p>How quickly content like text or images are painted onto your page. A good user experience is 0.9s or less.</p>	<p>Much longer than recommended</p> <p><b>1.7s</b></p>	<p><b>Time to Interactive</b></p> <p>How long it takes for your page to become fully interactive. A good user experience is 2.5s or less.</p>	<p>Much longer than recommended</p> <p><b>5.3s</b></p>
<p><b>Speed Index</b></p> <p>How quickly the contents of your page are visibly populated. A good user experience is 1.3s or less.</p>	<p>Much longer than recommended</p> <p><b>2.8s</b></p>	<p><b>Total Blocking Time</b></p> <p>How much time is blocked by scripts during your page loading process. A good user experience is 150ms or less.</p>	<p>Much longer than recommended</p> <p><b>506ms</b></p>
<p><b>Largest Contentful Paint</b></p> <p>How long it takes for the largest element of content (e.g. a hero image) to be painted on your page. A good user experience is 1.2s or less.</p>	<p>Much longer than recommended</p> <p><b>2.6s</b></p>	<p><b>Cumulative Layout Shift</b></p> <p>How much your page's layout shifts as it loads. A good user experience is a score of 0.1 or less.</p>	<p>Good - Nothing to do here</p> <p><b>0</b></p>

### Browser Timings

Redirect	0ms	Connect	191ms	Backend	121ms
TTFB	312ms	First Paint	1.7s	DOM Int.	1.8s
DOM Loaded	3.6s	Onload	5.3s	Fully Loaded	12.2s

IMPACT	AUDIT	
Med-Low	<b>Lazy load third-party resources with facades</b> <span>TBT</span>	1 facade alternative available
Med-Low	<b>Properly size images</b>	Potential savings of 276KB
Low	<b>Allow back/forward cache restoration</b>	2 failure reasons
Low	<b>Reduce unused JavaScript</b> <span>LCP</span>	Potential savings of 425KB
Low	<b>Reduce unused CSS</b> <span>FCP</span> <span>LCP</span>	Potential savings of 196KB
Low	<b>Use a Content Delivery Network (CDN)</b>	1 resource found
Low	<b>Use video formats for animated content</b> <span>LCP</span>	Potential savings of 88.6KB
Low	<b>Reduce JavaScript execution time</b> <span>TBT</span>	917ms spent executing JavaScript
Low	<b>Avoid an excessive DOM size</b> <span>TBT</span>	672 elements
Low	<b>Preconnect to required origins</b> <span>FCP</span> <span>LCP</span>	Potential savings of 96ms
Low	<b>Serve images in next-gen formats</b>	Potential savings of 260KB
Low	<b>Defer offscreen images</b>	Potential savings of 105KB
Low	<b>Ensure text remains visible during webfont load</b> <span>FCP</span> <span>LCP</span>	1 font found
Low	<b>Avoid chaining critical requests</b> <span>FCP</span> <span>LCP</span>	22 chains found
Low	<b>Reduce initial server response time</b> <span>FCP</span> <span>LCP</span>	Root document took 120ms
N/A	<b>Largest Contentful Paint element</b> <span>LCP</span>	2,600 ms
N/A	<b>Avoid serving legacy JavaScript to modern browsers</b> <span>TBT</span>	Potential savings of 32.0KB
N/A	<b>Avoid large layout shifts</b> <span>CLS</span>	3 elements found
N/A	<b>Minimize main-thread work</b> <span>TBT</span>	Main-thread busy for 2.5s
N/A	<b>Reduce the impact of third-party code</b> <span>TBT</span>	Third-party code blocked the main thread for 243ms
N/A	<b>User Timing marks and measures</b>	